

Weekly Performance Report

Monday, 08 April 2019 - Sunday, 14 April 2019



Overview of Last Week's Performance

Coal Delivery

- Planned rates were 590kt below target while Actual inbound performance was 537kt below the Declared Inbound Throughput (DIT). Total losses finished the week at 7.7% compared to the 2019 declared target of 8.0%.
- April month-to-date throughput is currently 4,946kt (128.9Mtpa) which is 1,320kt below the DIT, with total losses of 7.5%.

Shiploading - Port Waratah Only

- Planned rates were 1,335kt below target while Actual outbound performance was 1,028kt below the Declared Outbound Throughput (DOT). April month-to-date shiploading is currently 3,271kt (85.3Mtpa), 1,746kt below the DOT.
- Port Waratah port stocks finished the week at 1,562kt, a decrease of 355kt from the previous week.

Coal Chain Demand

- April nominations at Port Waratah are currently 8.3Mt.
- Based on terminal demand the Port Waratah vessel queue is estimated to be less than five at the end of the month.
- At Port Waratah, there were four vessels in the offshore queue at the end of the week.

Throughput Indicators

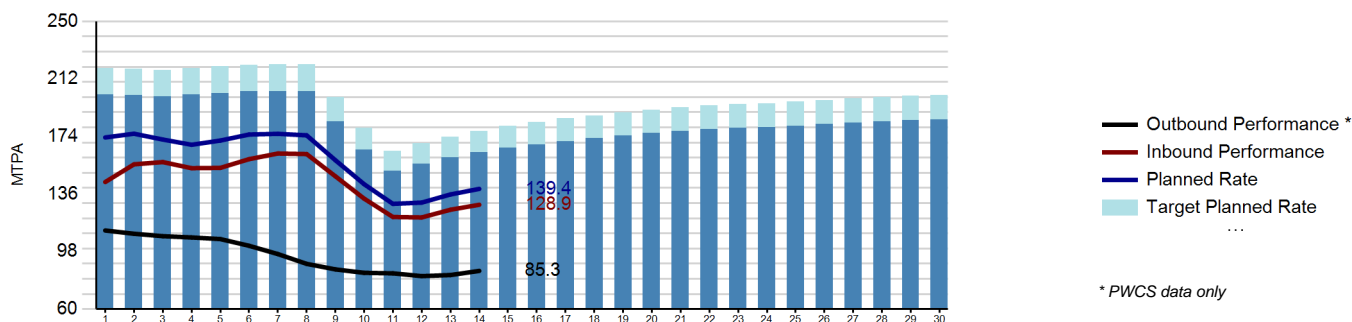
Inbound Receivals ('000 tonnes) - PWCS & NCIG

	This Week		Month to Date	
	Tonnes	MTPA	Tonnes	MTPA
Declared Inbound Throughput	2,361.4	123.1	6,265.8	163.4
Actual Variance to TPR	-742.6		-1,865.0	
Budgeted Variance to TPR	-205.3		-544.9	
Actual Variance to DIT	-537.3	-28.0	-1,320.1	-34.5
Actual Performance	1,824.1	95.1	4,945.7	128.9

Outbound Loading ('000 tonnes) - PWCS Only

	This Week		Month to Date	
	Tonnes	MTPA	Tonnes	MTPA
Declared Outbound Throughput	2,450.1	127.8	5,016.7	130.8
Actual Variance to TPR	-1,361.8		-2,429.6	
Budgeted Variance to TPR	-334.1		-684.1	
Actual Variance to DOT	-1,027.7	-53.6	-1,745.5	-45.5
Actual Performance	1,422.4	74.2	3,271.2	85.3

Monthly Cumulative Performance Graph

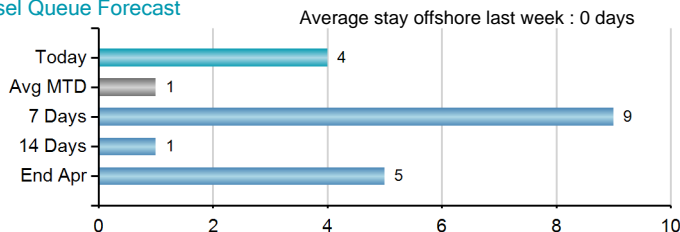


Terminal Indicators - PWCS

Load Vessel Summary

	Last Week					Month to Date				
	Vessels Sailed		Vessel load time (avg hrs)		On-time sail	Vessels Sailed		Vessel load time (avg hrs)		On-time sail
	Planned	Actual	Planned	Actual	Avg Delay (hrs)	Planned	Actual	Planned	Actual	Avg Delay (hrs)
KCT	10	10	18	16	-1.1	25	26	18	16	0.3
CCT	3	3	31	23	-2.8	7	7	32	27	-1.3

Vessel Queue Forecast



Port Stocks ('000 tonnes)

	Port Stocks		Predicted Stocks	
	Opening	Closing	Next Week	2 Weeks
CCT	350,884	176,386		
KCT	1,566,780	1,385,831		
Total	1,917,664	1,562,217		

Coal Chain Demand Indicators - PWCS

Forecast and Nominated Vessel Arrivals

	Producer forecast arrivals (MT)	Nominated arrivals (MT)
Apr	8.7	8.3
May	9.8	0.8
Jun	10.3	0.0

Important Information

This report has been prepared by HVCCC for the purpose of providing key metrics information regarding coal chain performance. It is for information purposes only.

HVCCC has made every reasonable effort to ensure the information in this Report is correct at the time it is issued, however HVCCC does not give any warranty that the information contained herein is free from error or omission and to the extent permissible by law, HVCCC excludes all liability for any loss or damage (including indirect, special or consequential loss or damage) arising from any use of, or reliance upon, the information or material contained herein by any party for any purpose.