

# Weekly Performance Report

Monday, 31 December 2018 - Sunday, 06 January 2019



## Overview of Last Week's Performance

### Coal Delivery

- Planned rates were 861kt below target while Actual inbound performance was 737kt below the Declared Inbound Throughput (DIT). Total losses finished the week at 6.4% compared to the 2019 declared target of 8.0%.
- January month-to-date throughput is currently 2,683kt (163.2Mtpa) which is 678kt below the DIT, with total losses of 7.5%.

### Shiploading - Port Waratah Only

- Planned rates were 1,174kt below target while Actual outbound performance was 812kt below the Declared Outbound Throughput (DOT). January month-to-date shiploading is currently 1,317kt (80.1Mtpa), 830kt below the DOT.
- Port Waratah port stocks finished the week at 1,955kt, an increase of 285kt from the previous week.

### Coal Chain Demand

- January nominations at Port Waratah are currently 7.9Mt.
- Based on terminal demand the Port Waratah vessel queue is estimated to be less than five at the end of the month.
- At Port Waratah, there were five vessels in the offshore queue at the end of the week.

## Throughput Indicators

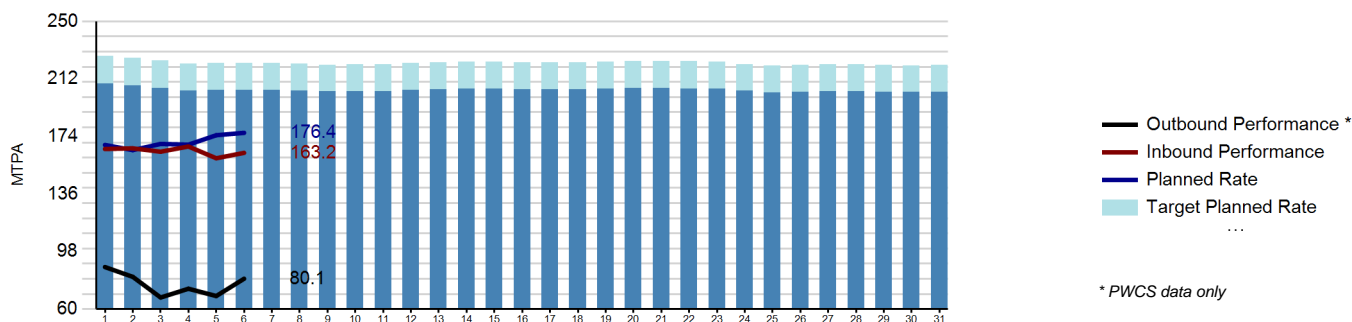
### Inbound Receptions ('000 tonnes) - PWCS & NCIG

	This Week		Month to Date	
	Tonnes	MTPA	Tonnes	MTPA
Declared Inbound Throughput	3,916.3	204.2	3,360.5	204.4
Actual Variance to TPR	-1,079.5		-970.1	
Budgeted Variance to TPR	-342.5		-292.2	
Actual Variance to DIT	-736.9	-38.4	-677.9	-41.2
Actual Performance	3,179.3	165.8	2,682.6	163.2

### Outbound Loading ('000 tonnes) - PWCS Only

	This Week		Month to Date	
	Tonnes	MTPA	Tonnes	MTPA
Declared Outbound Throughput	2,558.7	133.4	2,146.5	130.6
Actual Variance to TPR	-1,150.7		-1,122.3	
Budgeted Variance to TPR	-338.5		-292.7	
Actual Variance to DOT	-812.2	-42.4	-829.6	-50.5
Actual Performance	1,746.5	91.1	1,316.9	80.1

### Monthly Cumulative Performance Graph

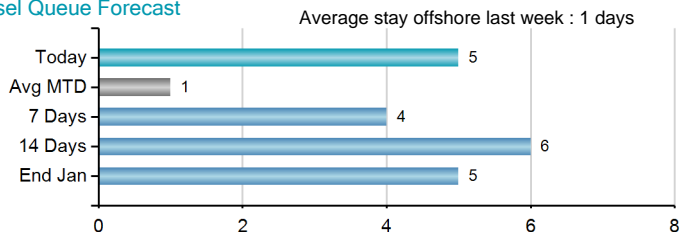


## Terminal Indicators - PWCS

### Load Vessel Summary

	Last Week					Month to Date				
	Vessels Sailed		Vessel load time (avg hrs)		On-time sail	Vessels Sailed		Vessel load time (avg hrs)		On-time sail
	Planned	Actual	Planned	Actual	Avg Delay (hrs)	Planned	Actual	Planned	Actual	Avg Delay (hrs)
KCT	15	15	18	16	1.9	14	14	18	16	2.0
CCT	4	4	25	21	-2.7	3	3	25	19	-4.6

### Vessel Queue Forecast



### Port Stocks ('000 tonnes)

	Port Stocks		Predicted Stocks	
	Opening	Closing	Next Week	2 Weeks
CCT	278,212	245,642		
KCT	1,392,325	1,709,585		
<b>Total</b>	<b>1,670,537</b>	<b>1,955,227</b>		

## Coal Chain Demand Indicators - PWCS

### Forecast and Nominated Vessel Arrivals

	Producer forecast arrivals (MT)	Nominated arrivals (MT)
Jan	9.3	7.9
Feb	9.9	0.2
Mar	4.3	0.2

#### Important Information

This report has been prepared by HVCCC for the purpose of providing key metrics information regarding coal chain performance. It is for information purposes only.

HVCCC has made every reasonable effort to ensure the information in this Report is correct at the time it is issued, however HVCCC does not give any warranty that the information contained herein is free from error or omission and to the extent permissible by law, HVCCC excludes all liability for any loss or damage (including indirect, special or consequential loss or damage) arising from any use of, or reliance upon, the information or material contained herein by any party for any purpose.