

Monthly Performance Report

31 March 2019



Overview of Last Month's Performance

Coal Delivery

- March planned throughput of 15,291kt (180.Mtpa) finished 2,815kt below target while Actual throughput finished the month at 14,308kt (168.5Mtpa), 2,350kt below the HVCC Declared Inbound Throughput (DIT). Total losses finished the month at 6.4% compared to the 2019 declared target of 8.0%.

Shiploading - Port Waratah Only

- March planned outbound throughput of 9,429kt (111.Mtpa) finished 3,102kt below target while Actual outbound throughput finished the month at 9,097kt (107.1Mtpa), 1,931kt below the Declared Outbound Throughput (DOT).
- Port Waratah port stocks finished the month at 1,660kt, an increase of 401kt from the beginning of the month.

Coal Chain Demand

- March actual vessel arrivals were 8.4Mt with a Port Waratah vessel queue of five at the end of the month.
- April nominations are currently 5.0Mt and based on terminal demand, the queue at Port Waratah is estimated to be less than five at the end of the month.

Throughput Indicators

Inbound Receivals ('M tonnes) - PWCS & NCIG

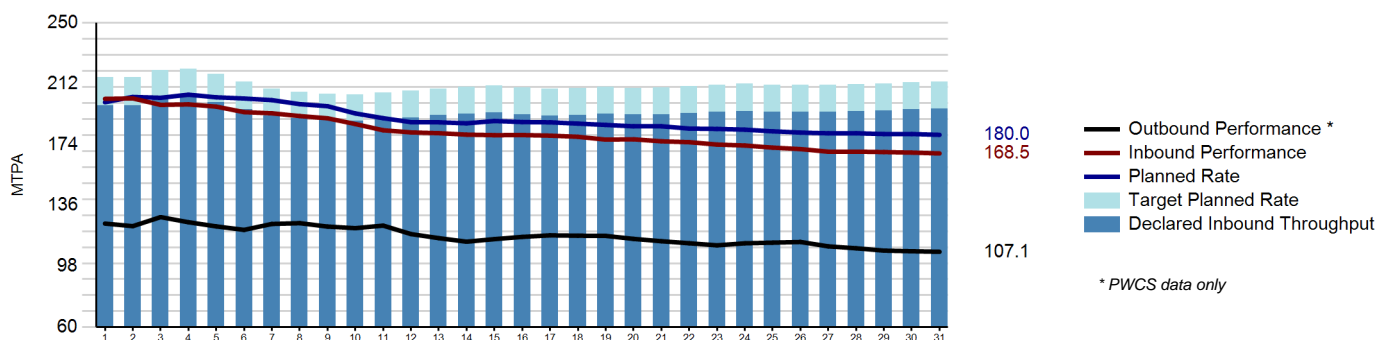
	Month		Year to Date	
	Tonnes	MTPA	Tonnes	MTPA
Declared Inbound Throughput	16.658	196.1	47.282	191.8
Actual Variance to TPR	-3.799		-11.755	
Budgeted Variance to TPR	-1.448		-4.111	
Actual Variance to DIT	-2.350	-27.7	-7.644	-31.0
Actual Performance	14.308	168.5	39.638	160.8

[Click for Details](#)

Outbound Loading ('M tonnes) - PWCS Only

	Month		Year to Date	
	Tonnes	MTPA	Tonnes	MTPA
Declared Outbound Throughput	11.027	129.8	32.121	130.3
Actual Variance to TPR	-3.434		-9.220	
Budgeted Variance to TPR	-1.504		-4.380	
Actual Variance to DOT	-1.930	-22.7	-4.840	-19.7
Actual Performance	9.097	107.1	27.281	110.6

Monthly Cumulative Performance Graph



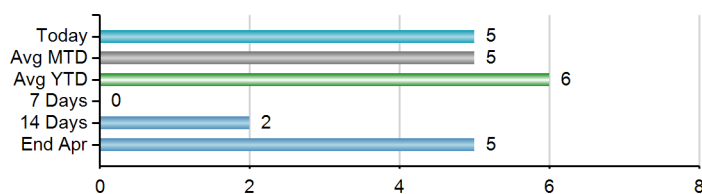
Terminal Indicators - PWCS

Load Vessel Summary

	Month					Year to Date				
	Vessels Sailed		Vessel load time (avg hrs)		On-time sail	Vessels Sailed		Vessel load time (avg hrs)		On-time sail
	Planned	Actual	Planned	Actual	Avg Delay (hrs)	Planned	Actual	Planned	Actual	Avg Delay (hrs)
KCT	82	82	17	15	0.0	247	246	17	16	0.3
CCT	20	20	29	28	2.3	59	59	28	27	0.9

Vessel Queue Forecast

Average stay offshore during month : 2 days



Port Stocks(*000 tonnes)

	Port Stocks		Predicted Stocks	
	Opening	Closing	Next Week	2 Weeks
CCT	45,021	236,489		
KCT	1,214,076	1,423,575		
Total	1,259,097	1,660,064		

Coal Chain Demand Indicators - PWCS

Forecast and Nominated Vessel Arrivals

	Producer forecast arrivals (MT)	Nominated arrivals (MT)
Mar	8.4	8.4
Apr	8.3	5.0
May	10.0	0.0

Important Information

This report has been prepared by HVCCC for the purpose of providing key metrics information regarding coal chain performance. It is for information purposes only.

HVCCC has made every reasonable effort to ensure the information in this Report is correct at the time it is issued, however HVCCC does not give any warranty that the information contained herein is free from error or omission and to the extent permissible by law, HVCCC excludes all liability for any loss or damage (including indirect, special or consequential loss or damage) arising from any use of, or reliance upon, the information or material contained herein by any party for any purpose.