

Monthly Performance Report

28 February 2019



Overview of Last Month's Performance

Coal Delivery

- February planned throughput of 12,580kt (164.0Mtpa) finished 1,939kt below target while Actual throughput finished the month at 11,584kt (151.0Mtpa), 1,774kt below the HVCC Declared Inbound Throughput (DIT). Total losses finished the month at 7.9% compared to the 2019 declared target of 8.0%.

Shiploading - Port Waratah Only

- February planned outbound throughput of 9,000kt (117.3Mtpa) finished 2,112kt below target while Actual outbound throughput finished the month at 8,903kt (116.1Mtpa), 876kt below the Declared Outbound Throughput (DOT).
- Port Waratah port stocks finished the month at 1,259kt, a decrease of 580kt from the beginning of the month.

Coal Chain Demand

- February actual vessel arrivals were 9.2Mt with a Port Waratah vessel queue of 15 at the end of the month.
- March nominations are currently 5.7Mt and based on terminal demand, the queue at Port Waratah is estimated to be less than five at the end of the month.

Throughput Indicators

Inbound Receivals ('M tonnes) - PWCS & NCIG

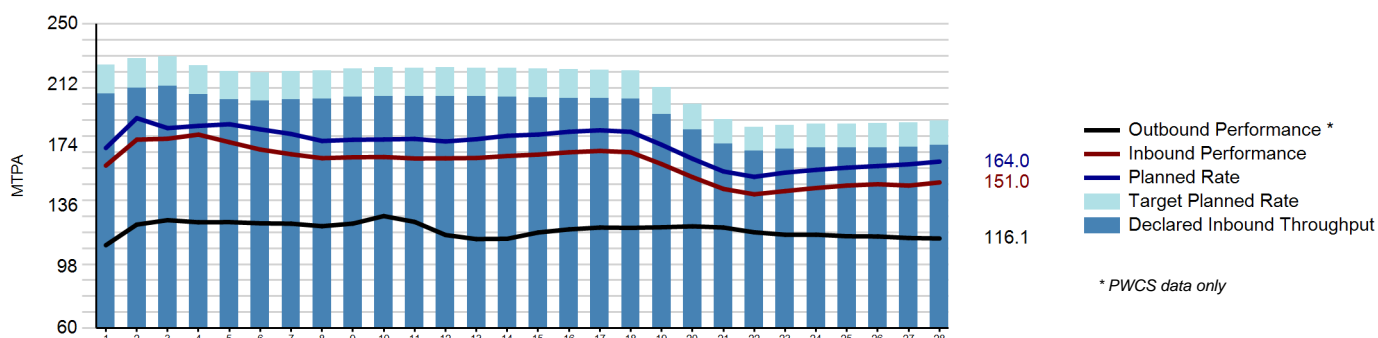
	Month		Year to Date	
	Tonnes	MTPA	Tonnes	MTPA
Declared Inbound Throughput	13.358	174.1	30.624	189.5
Actual Variance to TPR	-2.935		-7.957	
Budgeted Variance to TPR	-1.162		-2.663	
Actual Variance to DIT	-1.774	-23.1	-5.294	-32.7
Actual Performance	11.584	151.0	25.330	156.7

[Click for Details](#)

Outbound Loading ('M tonnes) - PWCS Only

	Month		Year to Date	
	Tonnes	MTPA	Tonnes	MTPA
Declared Outbound Throughput	9.779	127.5	21.094	130.5
Actual Variance to TPR	-2.210		-5.786	
Budgeted Variance to TPR	-1.333		-2.876	
Actual Variance to DOT	-0.876	-11.4	-2.910	-18.0
Actual Performance	8.903	116.1	18.184	112.5

Monthly Cumulative Performance Graph



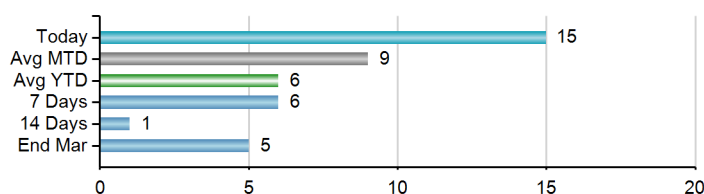
Terminal Indicators - PWCS

Load Vessel Summary

	Month					Year to Date				
	Vessels Sailed		Vessel load time (avg hrs)		On-time sail	Vessels Sailed		Vessel load time (avg hrs)		On-time sail
	Planned	Actual	Planned	Actual	Avg Delay (hrs)	Planned	Actual	Planned	Actual	Avg Delay (hrs)
KCT	83	82	17	16	0.6	165	164	17	16	0.7
CCT	17	17	28	26	1.4	39	39	28	26	0.3

Vessel Queue Forecast

Average stay offshore during month : 2 days



Port Stocks ('000 tonnes)

	Port Stocks		Predicted Stocks	
	Opening	Closing	Next Week	2 Weeks
CCT	251,400	45,021		
KCT	1,587,477	1,214,076		
Total	1,838,877	1,259,097		

Coal Chain Demand Indicators - PWCS

Forecast and Nominated Vessel Arrivals

	Producer forecast arrivals (MT)	Nominated arrivals (MT)
Feb	9.2	9.2
Mar	8.6	5.7
Apr	9.1	0.0

Important Information

This report has been prepared by HVCCC for the purpose of providing key metrics information regarding coal chain performance. It is for information purposes only.

HVCCC has made every reasonable effort to ensure the information in this Report is correct at the time it is issued, however HVCCC does not give any warranty that the information contained herein is free from error or omission and to the extent permissible by law, HVCCC excludes all liability for any loss or damage (including indirect, special or consequential loss or damage) arising from any use of, or reliance upon, the information or material contained herein by any party for any purpose.