

Monthly Performance Report

31 January 2019



Overview of Last Month's Performance

Coal Delivery

- January planned throughput of 14,757kt (173.8Mtpa) finished 4,011kt below target while Actual throughput finished the month at 13,747kt (161.9Mtpa), 3,520kt below the HVCC Declared Inbound Throughput (DIT). Total losses finished the month at 6.8% compared to the 2019 declared target of 8.0%.

Shiploading - Port Waratah Only

- January planned outbound throughput of 9,301kt (109.5Mtpa) finished 3,557kt below target while Actual outbound throughput finished the month at 9,281kt (109.3Mtpa), 2,034kt below the Declared Outbound Throughput (DOT).
- Port Waratah port stocks finished the month at 1,839kt, an increase of 287kt from the beginning of the month.

Coal Chain Demand

- January actual vessel arrivals were 10.1Mt with a Port Waratah vessel queue of seven at the end of the month.
- February nominations are currently 7.0Mt and based on terminal demand, the queue at Port Waratah is estimated to be eight at the end of February.

Throughput Indicators

Inbound Receivals ('M tonnes) - PWCS & NCIG

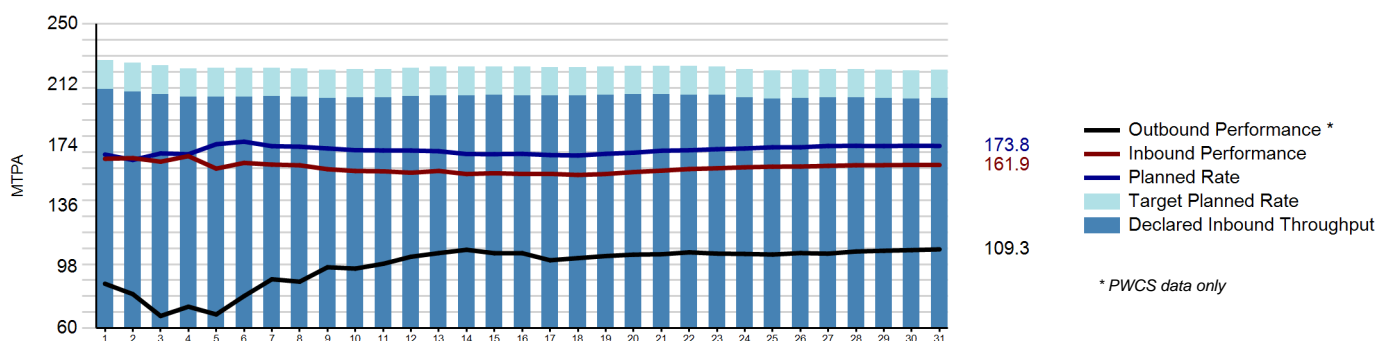
	Month		Year to Date	
	Tonnes	MTPA	Tonnes	MTPA
Declared Inbound Throughput	17.266	203.3	17.266	203.3
Actual Variance to TPR	-5.021		-5.021	
Budgeted Variance to TPR	-1.501		-1.501	
Actual Variance to DIT	-3.520	-41.4	-3.520	-41.4
Actual Performance	13.747	161.9	13.747	161.9

[Click for Details](#)

Outbound Loading ('M tonnes) - PWCS Only

	Month		Year to Date	
	Tonnes	MTPA	Tonnes	MTPA
Declared Outbound Throughput	11.315	133.2	11.315	133.2
Actual Variance to TPR	-3.576		-3.576	
Budgeted Variance to TPR	-1.543		-1.543	
Actual Variance to DOT	-2.033	-23.9	-2.033	-23.9
Actual Performance	9.281	109.3	9.281	109.3

Monthly Cumulative Performance Graph



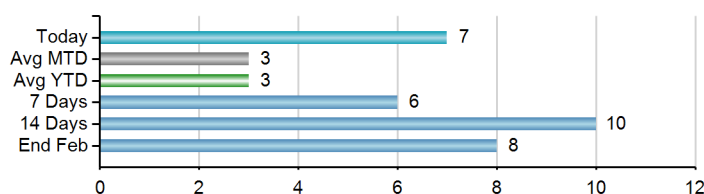
Terminal Indicators - PWCS

Load Vessel Summary

	Month					Year to Date				
	Vessels Sailed		Vessel load time (avg hrs)		On-time sail	Vessels Sailed		Vessel load time (avg hrs)		On-time sail
	Planned	Actual	Planned	Actual	Avg Delay (hrs)	Planned	Actual	Planned	Actual	Avg Delay (hrs)
KCT	82	82	17	16	0.8	82	82	17	16	0.8
CCT	22	22	28	26	-0.6	22	22	28	26	-0.6

Vessel Queue Forecast

Average stay offshore during month : 1 days



Port Stocks('000 tonnes)

	Port Stocks		Predicted Stocks	
	Opening	Closing	Next Week	2 Weeks
CCT	282,625	251,400		
KCT	1,269,477	1,587,477		
Total	1,552,102	1,838,877		

Coal Chain Demand Indicators - PWCS

Forecast and Nominated Vessel Arrivals

	Producer forecast arrivals (MT)	Nominated arrivals (MT)
Jan	10.1	10.1
Feb	9.8	7.0
Mar	9.8	0.4

Important Information

This report has been prepared by HVCCC for the purpose of providing key metrics information regarding coal chain performance. It is for information purposes only.

HVCCC has made every reasonable effort to ensure the information in this Report is correct at the time it is issued, however HVCCC does not give any warranty that the information contained herein is free from error or omission and to the extent permissible by law, HVCCC excludes all liability for any loss or damage (including indirect, special or consequential loss or damage) arising from any use of, or reliance upon, the information or material contained herein by any party for any purpose.