

Monthly Performance Report

30 November 2018



Overview of Last Month's Performance

Coal Delivery

- November planned throughput of 12,721kt (154.8Mtpa) finished 1,971kt below target while Actual throughput finished the month at 11,762kt (143.1Mtpa), 1,710kt below the HVCC Declared Inbound Throughput (DIT). Total losses finished the month at 7.6% compared to the 2018 declared target of 8.3%.

Shiploading - Port Waratah Only

- November planned outbound throughput of 7,399kt (90.0Mtpa) finished 2,521kt below target while Actual outbound throughput finished the month at 7,061kt (85.9Mtpa), 1,867kt below the Declared Outbound Throughput (DOT).
- Port Waratah port stocks finished the month at 2,018kt, an increase of 576kt from the beginning of the month.

Coal Chain Demand

- November actual vessel arrivals were 7.9Mt with a Port Waratah vessel queue of 10 at the end of the month.
- December nominations are currently 6.1Mt and based on terminal demand, the queue at Port Waratah is estimated to be less than five at the end of the month.

Throughput Indicators

Inbound Receivals ('M tonnes) - PWCS & NCIG

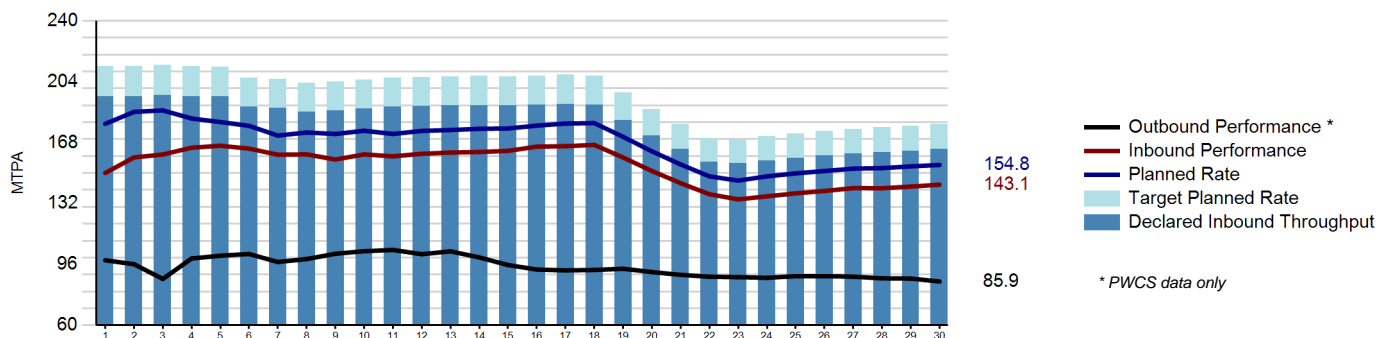
	Month		Year to Date	
	Tonnes	MTPA	Tonnes	MTPA
Declared Inbound Throughput	13,472	163.9	166,407	181.9
Actual Variance to TPR	-2,929		-36,600	
Budgeted Variance to TPR	-1,219		-15,062	
Actual Variance to DIT	-1,710	-20.8	-21,538	-23.5
Actual Performance	11,762	143.1	144,869	158.3

[Click for Details](#)

Outbound Loading ('M tonnes) - PWCS Only

	Month		Year to Date	
	Tonnes	MTPA	Tonnes	MTPA
Declared Outbound Throughput	8,928	108.6	114,173	124.8
Actual Variance to TPR	-2,859		-29,479	
Budgeted Variance to TPR	-0,992		-12,686	
Actual Variance to DOT	-1,867	-22.7	-16,793	-18.4
Actual Performance	7,061	85.9	97,379	106.4

Monthly Cumulative Performance Graph



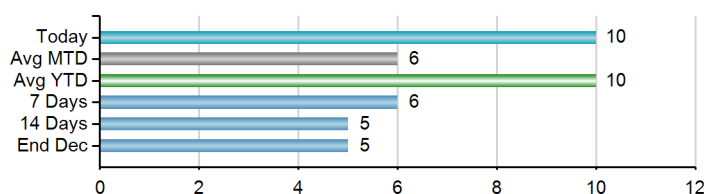
Terminal Indicators - PWCS

Load Vessel Summary

	Month					Year to Date				
	Vessels Sailed		Vessel load time (avg hrs)		On-time sail	Vessels Sailed		Vessel load time (avg hrs)		On-time sail
	Planned	Actual	Planned	Actual	Avg Delay (hrs)	Planned	Actual	Planned	Actual	Avg Delay (hrs)
KCT	61	61	17	15	0.9	867	868	16	15	2.0
CCT	21	21	27	26	2.2	253	253	28	28	3.8

Vessel Queue Forecast

Average stay offshore during month : 2 days



Port Stocks ('000 tonnes)

	Port Stocks		Predicted Stocks	
	Opening	Closing	Next Week	2 Weeks
CCT	263,976	380,740		
KCT	1,177,649	1,637,201		
Total	1,441,625	2,017,941		

Coal Chain Demand Indicators - PWCS

Forecast and Nominated Vessel Arrivals

	Producer forecast arrivals (MT)	Nominated arrivals (MT)
Nov	7.9	7.9
Dec	9.3	6.1

Important Information

This report has been prepared by HVCCC for the purpose of providing key metrics information regarding coal chain performance. It is for information purposes only.

HVCCC has made every reasonable effort to ensure the information in this Report is correct at the time it is issued, however HVCCC does not give any warranty that the information contained herein is free from error or omission and to the extent permissible by law, HVCCC excludes all liability for any loss or damage (including indirect, special or consequential loss or damage) arising from any use of, or reliance upon, the information or material contained herein by any party for any purpose.