

# Weekly Performance Report

## Monday, 19 July 2010 - Sunday, 25 July 2010



### Overview of Last Week's Performance

#### Cargo Assembly

- Actual inbound performance was 61kt above the revised combined Declared Inbound Throughput (DIT) for the week (PWCS 55kt, NCIG 6kt). Planned rates were 56kt below target (PWCS -55kt, NCIG -1kt) with trains parked due to insufficient demand. Member losses finished the week 99kt better than target. Total losses were 10.9% compared to a revised target of 15%. A number of records were set over the weekend with actual daily inbound rates of up to 135Mtpa and 92% compliance to plan.
- July's month-to-date throughput is currently 112.6Mtpa (7,714kt) which is 48kt below the combined DIT (PWCS -60kt, NCIG 12kt).

#### Shiploading

- PWCS shiploading for the week was 214kt above the PWCS Declared Outbound Throughput (DOT) with a favourable vessel mix and improved inbound performance. NCIG shiploading for the week was 149kt.
- July's PWCS month-to-date is at a rate of 99.8Mtpa, 7kt above the PWCS DOT. PWCS port stocks have increased to 1,142kt. July's NCIG month-to-date is 487kt.

#### Coal Chain Demand

- July's nominations for PWCS are 7.3Mt compared to a DOT of 8.4Mt. The vessel queue is expected to be 44 at the end of August based on Producer forecasts and estimated shiploading
- There were 40 vessels in the offshore queue at the end of the week, 13 of these vessels have coal availability issues and are classed as 'dead'.

### Throughput Indicators

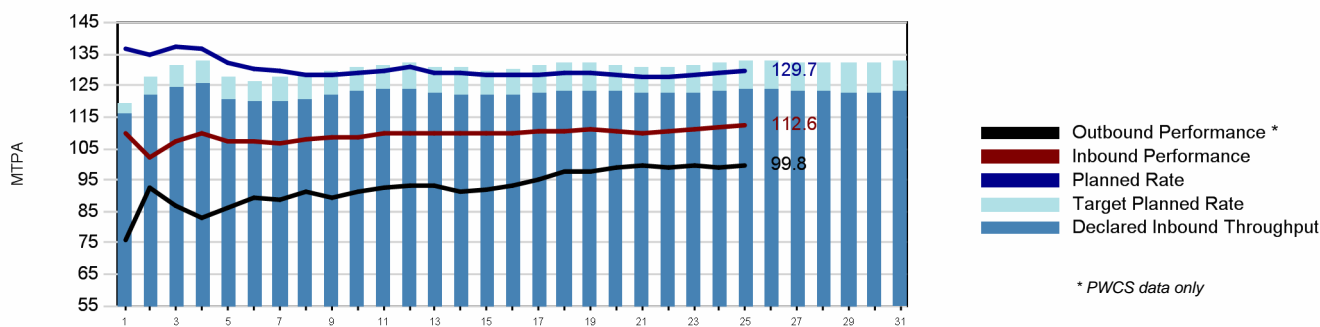
#### Inbound Receivals ('000 tonnes)

	This Week		Month to Date	
	Tonnes	MTPA	Tonnes	MTPA
Declared Inbound Throughput	2,198.7	114.6	7,761.1	113.3
Actual Variance to TPR	-314.1		-1,366.2	
Budgeted Variance to TPR	-374.8		-1,318.6	
Actual Variance to DIT	60.8	3.2	-47.6	-0.7
Actual Performance	2,259.5	117.8	7,713.5	112.6

#### Outbound Loading ('000 tonnes)

	This Week		Month to Date	
	Tonnes	MTPA	Tonnes	MTPA
Declared Outbound Throughput	1,820.4	94.9	6,830.6	99.7
Actual Variance to TPR	204.8		-100.2	
Budgeted Variance to TPR	-158.3		-594.0	
Actual Variance to DOT	363.1	19.0	493.8	7.2
Actual Performance	2,183.5	113.9	7,324.3	106.9

#### Monthly Cumulative Performance Graph



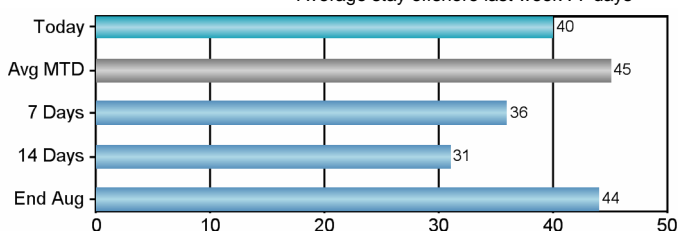
### Terminal Indicators - PWCS

#### Load Vessel Summary

	Last Week					Month to Date				
	Vessels Sailed		Vessel load time (avg hrs)		On-time sail	Vessels Sailed		Vessel load time (avg hrs)		On-time sail
	Planned	Actual	Planned	Actual	Avg Delay (hrs)	Planned	Actual	Planned	Actual	Avg Delay (hrs)
KCT	19	19	17	17	1.5	52	53	19	19	0.1
CCT	5	4	35	34	2.1	23	21	35	35	2.3

#### Vessel Queue Forecast

Average stay offshore last week : 7 days



#### Port Stocks ('000 tonnes)

	Port Stocks		Predicted Stocks	
	Opening	Closing	Next Week	2 Weeks
CCT	217,045	386,374		
KCT	887,633	755,597		
<b>Total</b>	<b>1,104,678</b>	<b>1,141,971</b>	<b>1,205,520</b>	<b>1,149,773</b>

### Coal Chain Demand Indicators - PWCS

#### Forecast and Nominated Vessel Arrivals

	Declared minimum throughput (MT)	Estimated monthly shiploading (MT)	Producer forecast arrivals (MT)	Nominated arrivals (MT)
Jul	8.4	8.5	7.2	7.3
Aug	7.4	7.4	7.9	3.9
Sep	8.1	8.1	8.9	0.2