

Monthly Performance Report

31 January 2012



Overview of Last Month's Performance

Cargo Assembly

- January's planned rate of 141.5Mtpa finished 1,967kt behind target (PWCS -1,487kt, NCIG -480kt) while Actual throughput finished at 130.4Mtpa, 720kt behind the combined Declared Inbound Throughput (DIT) (PWCS -492kt, NCIG -228kt). Total losses were 9.0% compared to a target of 13.6%.

Shiploading

- PWCS shiploading for January finished at 109.9Mtpa, 421kt below the Declared Outbound Throughput (DOT).
- PWCS port stocks finished the month at 1,083kt, an increase of 48kt from the beginning of the month.

Coal Chain Demand

- January's actual PWCS vessel arrivals were 8.1Mt with a PWCS vessel queue of 42 at the end of the month.
- The PWCS queue is expected to be around 26 at the end of February.

Throughput Indicators

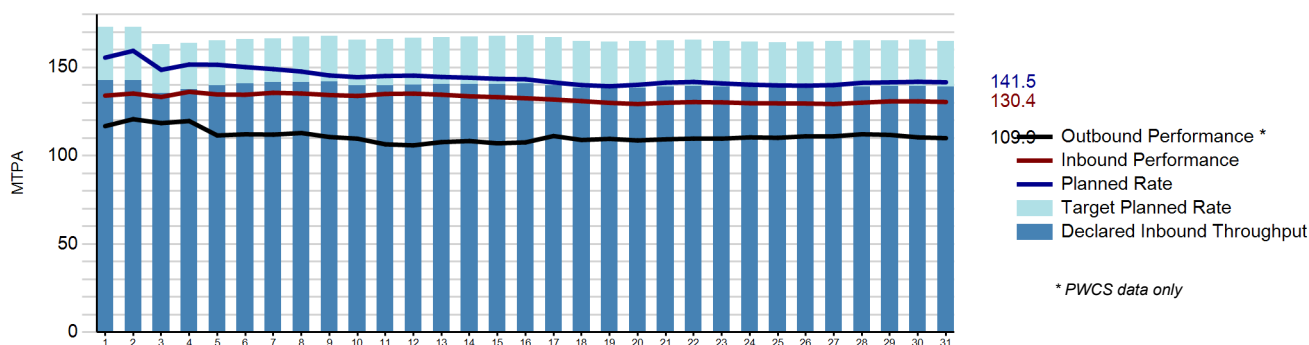
Inbound Receivals ('M tonnes) - PWCS & NCIG

	Month		Year to Date	
	Tonnes	MTPA	Tonnes	MTPA
Declared Inbound Throughput	11.765	138.9	11.765	138.9
Actual Variance to TPR	-2.910		-2.910	
Budgeted Variance to TPR	-2.189		-2.189	
Actual Variance to DIT	-0.720	-8.5	-0.720	-8.5
Actual Performance	11.045	130.4	11.045	130.4

Outbound Loading ('M tonnes) - PWCS Only

	Month		Year to Date	
	Tonnes	MTPA	Tonnes	MTPA
Declared Outbound Throughput	9.730	114.9	9.730	114.9
Actual Variance to TPR	-1.267		-1.267	
Budgeted Variance to TPR	-0.846		-0.846	
Actual Variance to DOT	-0.421	-5.0	-0.421	-5.0
Actual Performance	9.310	109.9	9.310	109.9

Monthly Cumulative Performance Graph



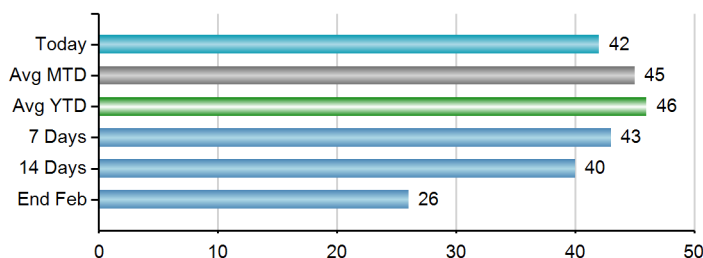
Terminal Indicators - PWCS

Load Vessel Summary

	Month					Year to Date				
	Vessels Sailed		Vessel load time (avg hrs)		On-time sail	Vessels Sailed		Vessel load time (avg hrs)		On-time sail
	Planned	Actual	Planned	Actual	Avg Delay (hrs)	Planned	Actual	Planned	Actual	Avg Delay (hrs)
KCT	69	68	18	18	1.2	69	68	18	18	1.2
CCT	34	34	31	30	0.5	34	34	31	30	0.5

Vessel Queue Forecast

Average stay offshore during month : 15 days



Port Stocks('000 tonnes)

	Port Stocks		Predicted Stocks	
	Opening	Closing	Next Week	2 Weeks
CCT	260,396	300,602		
KCT	774,712	782,162		
Total	1,035,108	1,082,764	902,804	943,634

Coal Chain Demand Indicators - PWCS

Forecast and Nominated Vessel Arrivals

	Declared minimum throughput (MT)	Estimated monthly shiploading (MT)	Producer forecast arrivals (MT)	Nominated arrivals (MT)
Jan	9.7	9.3	8.1	8.1
Feb	9.0	9.0	7.4	4.8
Mar	8.6	8.6	9.1	0.0