

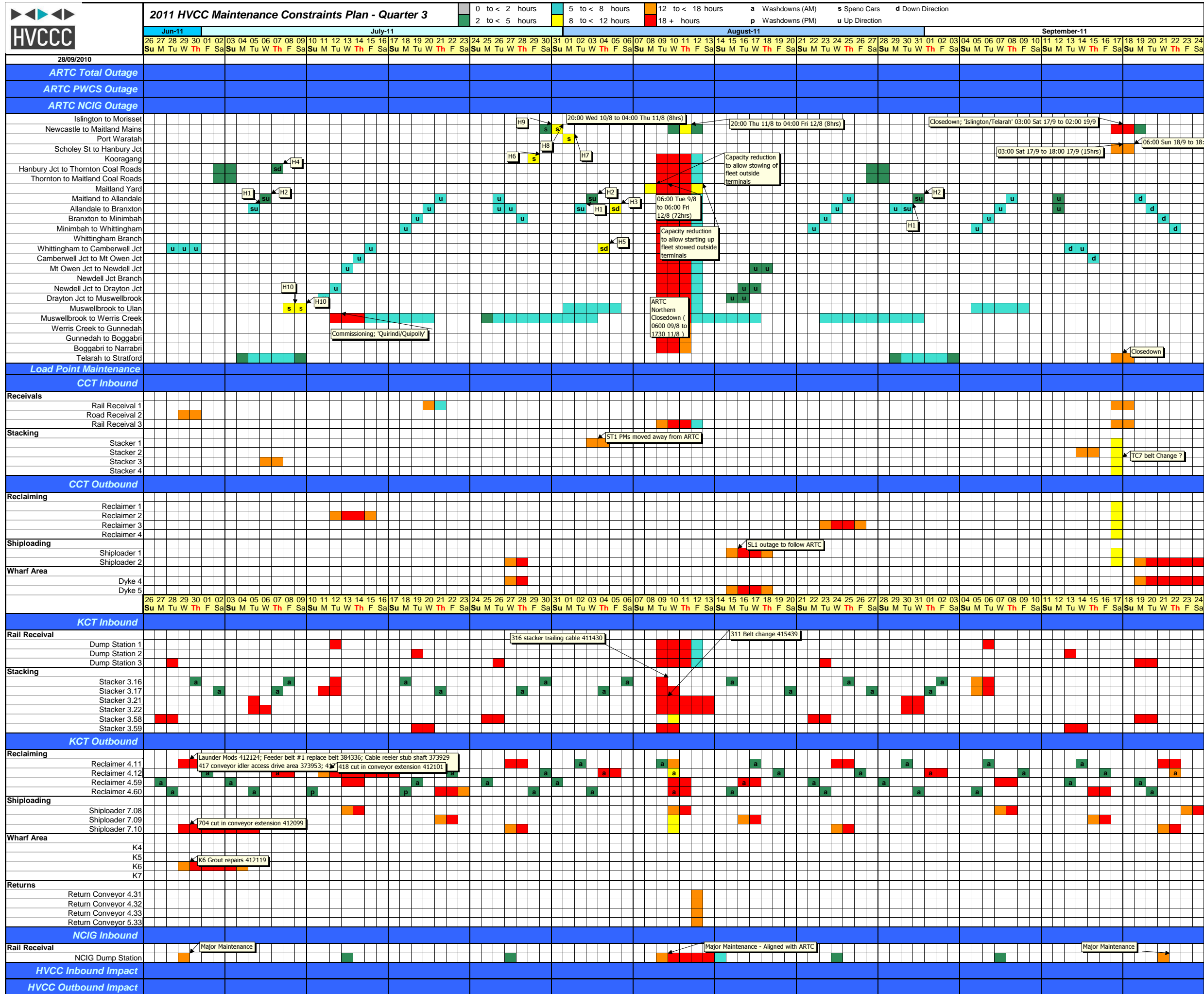


### 2011 HVCC Maintenance Constraints Plan - Quarter 1

0 to < 2 hours    5 to < 8 hours    12 to < 18 hours    a Washdowns (AM)    s Speno Cars    d Down Direction  
 2 to < 5 hours    8 to < 12 hours    18+ hours    p Washdowns (PM)    u Up Direction

	Dec-10	January-11														February-11														March-11													
	26 27 28 29 30 31 01	02 03 04 05 06 07 08	09 10 11 12 13 14 15	16 17 18 19 20 21 22	23 24 25 26 27 28 29	30 31 01 02 03 04 05	06 07 08 09 10 11 12	13 14 15 16 17 18 19	20 21 22 23 24 25 26	27 28 01 02 03 04 05	06 07 08 09 10 11 12	13 14 15 16 17 18 19	20 21 22 23 24 25 26	27 28 01 02 03 04 05	06 07 08 09 10 11 12	13 14 15 16 17 18 19	20 21 22 23 24 25 26																										
	Su M Tu W Th F Sa	Su M Tu W Th F Sa	Su M Tu W Th F Sa	Su M Tu W Th F Sa	Su M Tu W Th F Sa	Su M Tu W Th F Sa	Su M Tu W Th F Sa	Su M Tu W Th F Sa	Su M Tu W Th F Sa	Su M Tu W Th F Sa	Su M Tu W Th F Sa	Su M Tu W Th F Sa	Su M Tu W Th F Sa	Su M Tu W Th F Sa	Su M Tu W Th F Sa	Su M Tu W Th F Sa	Su M Tu W Th F Sa																										
<b>ARTC Total Outage</b>																																											
<b>ARTC PWCS Outage</b>																																											
<b>ARTC NCIG Outage</b>																																											
Islington to Morisset																																											
Newcastle to Maitland Mains																																											
Port Waratah																																											
Scholey St to Hanbury Jct																																											
Kooragang																																											
Hanbury Jct to Thornton Coal Roads																																											
Thornton to Maitland Coal Roads																																											
Maitland Yard																																											
Maitland to Allandale																																											
Allandale to Branxton																																											
Branxton to Minimbah																																											
Minimbah to Whittingham																																											
Whittingham Branch																																											
Whittingham to Camberwell Jct																																											
Camberwell Jct to Mt Owen Jct																																											
Mt Owen Jct to Newdell Jct																																											
Newdell Jct Branch																																											
Newdell Jct to Drayton Jct																																											
Drayton Jct to Muswellbrook																																											
Muswellbrook to Ulan																																											
Muswellbrook to Werris Creek																																											
Werris Creek to Gunnedah																																											
Gunnedah to Boggabri																																											
Boggabri to Narrabri																																											
Telarah to Stratford																																											
<b>Load Point Maintenance</b>																																											
<b>CCT Inbound</b>																																											
<b>Receivals</b>																																											
Rail Receival 1																																											
Road Receival 2																																											
Rail Receival 3																																											
<b>Stacking</b>																																											
Stacker 1																																											
Stacker 2																																											
Stacker 3																																											
Stacker 4																																											
<b>CCT Outbound</b>																																											
<b>Reclaiming</b>																																											
Reclaimer 1																																											
Reclaimer 2																																											
Reclaimer 3																																											
Reclaimer 4																																											
<b>Shiploading</b>																																											
Shiploader 1																																											
Shiploader 2																																											
<b>Wharf Area</b>																																											
Dyke 4																																											
Dyke 5																																											
<b>KCT Inbound</b>																																											
<b>Rail Receival</b>																																											
Dump Station 1																																											
Dump Station 2																																											
Dump Station 3																																											
<b>Stacking</b>																																											
Stacker 3.16																																											
Stacker 3.17																																											
Stacker 3.21																																											
Stacker 3.22																																											
Stacker 3.58																																											
Stacker 3.59																																											
<b>KCT Outbound</b>																																											
<b>Reclaiming</b>																																											
Reclaimer 4.11																																											
Reclaimer 4.12																																											
Reclaimer 4.59																																											
Reclaimer 4.60																																											
<b>Shiploading</b>																																											
Shiploader 7.08																																											
Shiploader 7.09																																											
Shiploader 7.10																																											
<b>Wharf Area</b>																																											
K4																																											
K5																																											
K6																																											
K7																																											
<b>Returns</b>																																											
Return Conveyor 4.31																																											
Return Conveyor 4.32																																											
Return Conveyor 4.33																																											
Return Conveyor 5.33																																											
<b>NCIG Inbound</b>																																											
<b>Rail Receival</b>																																											
NCIG Dump Station																																											
<b>HVCC Inbound Impact</b>																																											
<b>HVCC Outbound Impact</b>																																											







2011 HVCC Maintenance Constraints Plan - Quarter 4

0 to < 2 hours 5 to < 8 hours 12 to < 18 hours a Washdowns (AM) s Speno Cars d Down Direction  
2 to < 5 hours 8 to < 12 hours 18+ hours p Washdowns (PM) u Up Direction

Sep-11 Oct-11 Nov-11 Dec-11  
25 26 27 28 29 30 01 02 03 04 05 06 07 08 09 10 11 12 13 14 15 16 17 18 19 20 21 22 23 24 25 26 27 28 29 30 31 01 02 03 04 05 06 07 08 09 10 11 12 13 14 15 16 17 18 19 20 21 22 23 24 25 26 27 28 29 30 31

